

DRAWING NUMBER
13-47

DRAWING NUMBER

DRAWING NUMBER

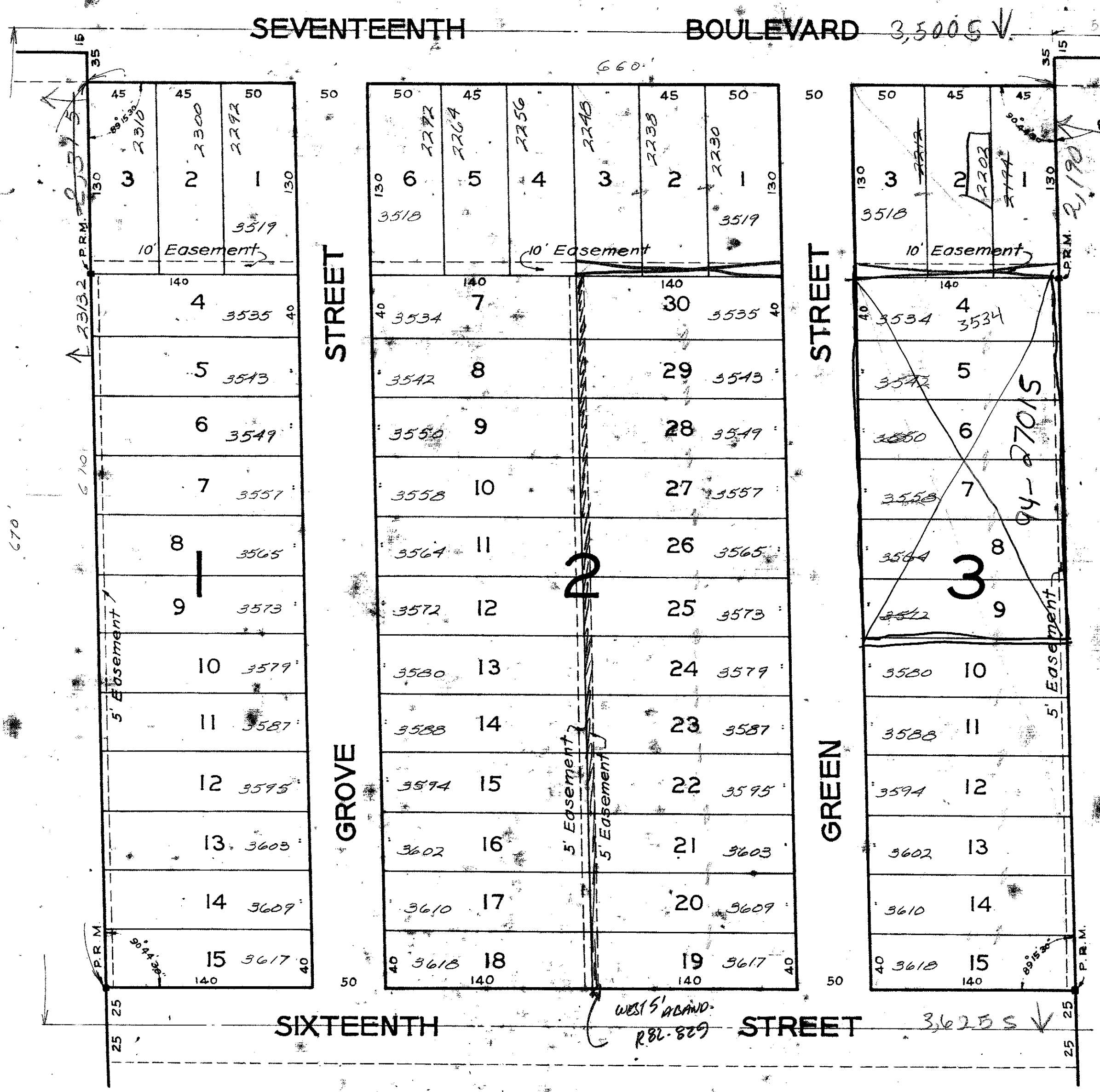
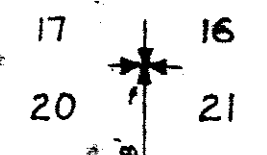
DRAWING NUMBER

WESTWORTH

A SUBDIVISION IN THE CITY OF LAKEWORTH, PALM BEACH COUNTY, FLORIDA

SCALE 1 IN = 60 FT.

Vacated ORB



20-44/43
(18)

47
13
47

- DEDICATION -

STATE OF FLORIDA
COUNTY OF PALM BEACH

KNOW ALL MEN BY THESE PRESENTS That Gladys M. Blackadder (single) owner in fee simple of the tract of land shown on this plat and described as being a subdivision of tracts 63 and 64 of Model Land Company's Subdivision of Section 20, Township 44 South, Range 43 East, as recorded in Book 5 and Page 79, Palm Beach County records, has caused said land to be surveyed and platted and does hereby dedicate to the perpetual use of the public as public highways the streets shown hereon, reserving unto herself the reversion and reversions thereof whenever the same shall be abandoned to the public or discontinued by law.

IN WITNESS WHEREOF, I have hereunto set my hand and seal the 10th day of December, A. D. 1925.

Signed in the presence of:
[Signature]
[Signature]

[Signature]
Gladys M. Blackadder

- ACKNOWLEDGEMENT -

STATE OF FLORIDA
COUNTY OF PALM BEACH

I HEREBY CERTIFY That on this day personally appeared before me, an officer duly authorized to administer oaths and take acknowledgements, Gladys M. Blackadder, to me well known and known to be the individual described in and who executed the foregoing dedication, and she acknowledged before me that she executed the same freely and voluntarily for the purpose therein expressed.

WITNESS my hand and official seal at West Palm Beach, County of Palm Beach, State of Florida this 14th day of December, A. D. 1925.

[Signature]
Notary Public
My commission expires 12/31/27

- ENGINEERS CERTIFICATE -

We certify that the location, measurements and angles of the boundary lines of the plat shown hereon are taken from actual data found on the ground by survey under our direction; that the subdivision into lots of the plat shown and as located by the above mentioned survey, was made under our direction and that the information shown hereon is true and accurate to the best of our knowledge and belief.

BUTLER, BARNETT & TAYLOR
By *[Signature]*
Florida State Certificate No. 14

Subscribed and sworn to before me this 5th day of December, A. D. 1925

[Signature]
Notary Public
My commission expires 12/31/27

APPROVED BY BOARD OF CITY COMMISSIONERS
OF LAKE WORTH

By *[Signature]*
City Engineer

APPROVED BY BOARD OF COUNTY COMMISSIONERS

By *[Signature]*
County Engineer

BUTLER, BARNETT & TAYLOR
ENGINEERS
20-44/43